



ALPHALINER



Evolution of carriers fleets

CONTENTS

Graph - Evolution of main carriers market shares 2000-2009

Graph - Evolution of TOP 5 carriers fleets - September 2005 to April 2009

Graph - Evolution of TOP 10 carriers market share 2000-2009

Series of 22 carriers fleet graphs with corporate data

- > A.P. Möller-Maersk
- > Mediterranean Shipping Co (MSC)
- > Evergreen Group
- > Hapag-Lloyd
- > China Shipping Container Line (CSCL)
- > COSCO Container Line (COSCON)
- > Hanjin Shipping
- > NOL-APL
- > Nippon Yusen Kaisha (NYK)
- > Mitsui-OSK Lines (MOL)
- > Kawasaki Line (K Line)
- > Orient Overseas Container Line (OOCL)
- > Yang Ming Line
- > Zim Integrated Shipping Services Ltd (ZISS)
- > CSAV Group
- > Hamburg Süd Group
- > Hyundai M.M.
- > Pacific International Lines (PIL)
- > Wan Hai Lines
- > United Arab Shipping Co (UASC)
- > MISC Berhad
- > Iran Republic Islamic Shipping Lines (IRISL)

Note on source : These graphs are derived from historical figures extracted from the Alphaliner database

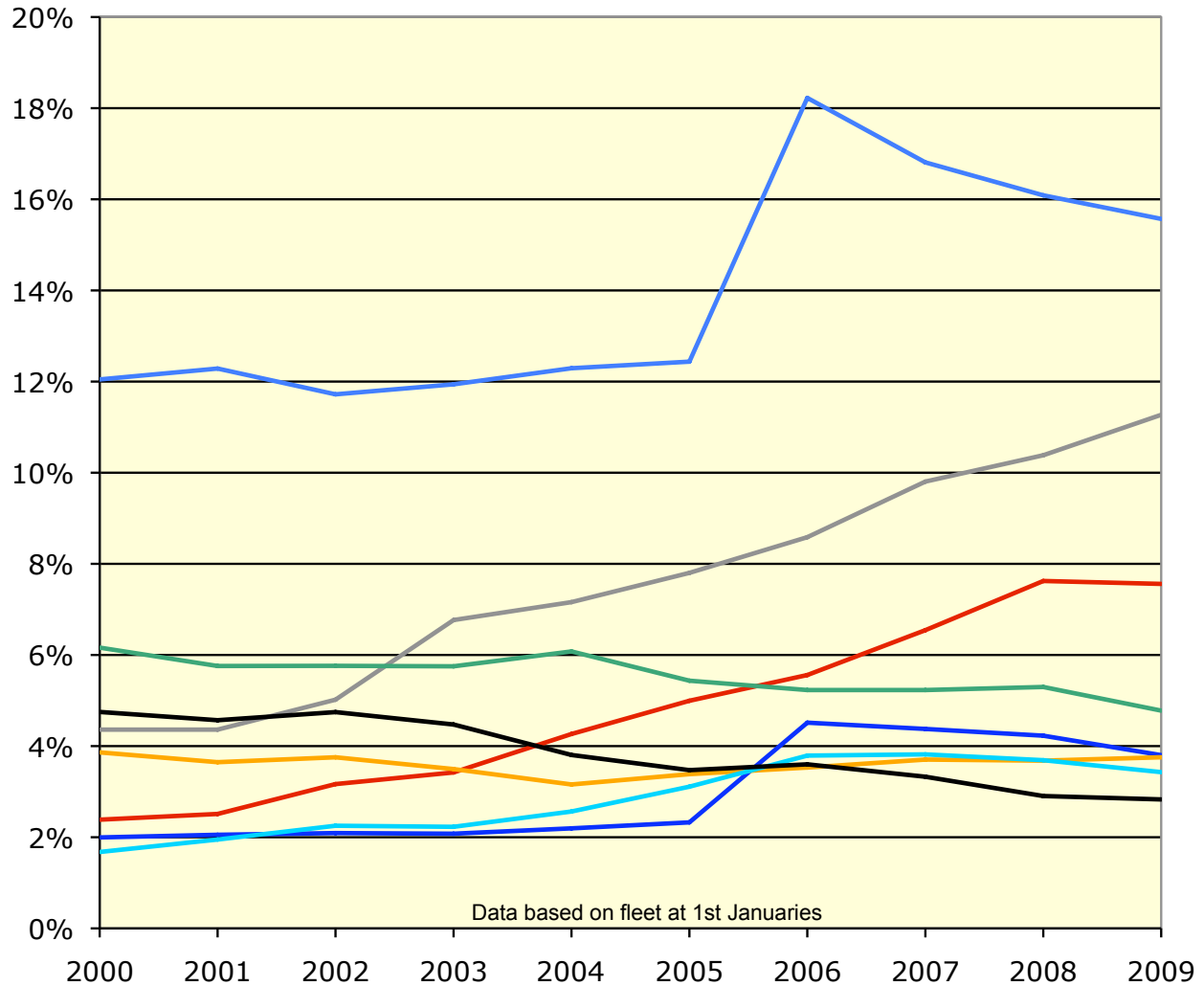
The information enclosed in the present document is given as guidance only and in good faith without guarantee.

The present document is extracted from a wider document available to Alphaliner subscribers.

Evolution of market shares 2000-2009

- Main Carriers -

Source : Alphaliner



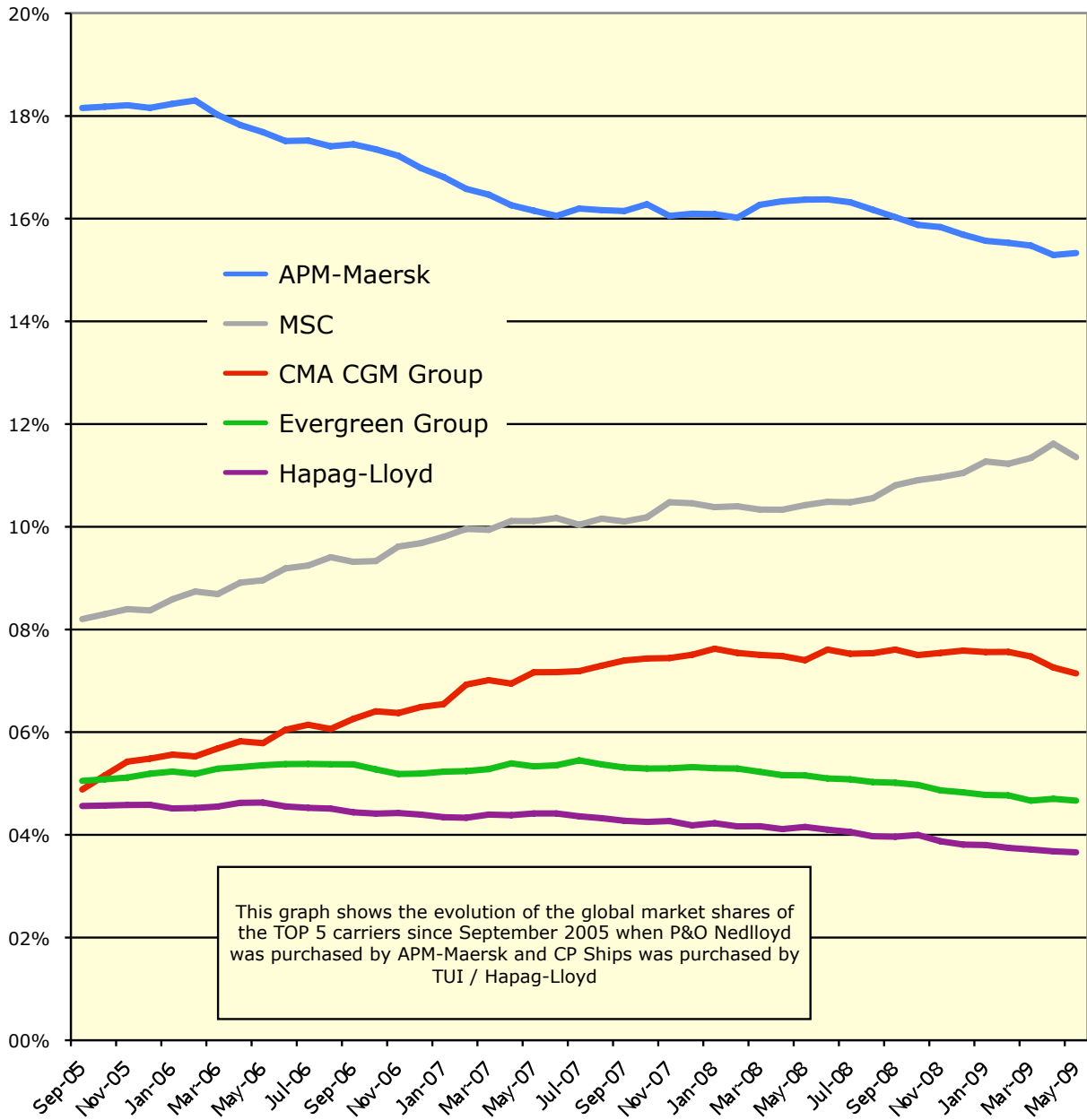
- APM-Maersk
- MSC
- CMA CGM Group
- Evergreen Group
- Hapag-Lloyd
- COSCO Container L.
- CSCL
- Hanjin / Senator

© Alphaliner 1999-2009

Evolution of Global market shares - Main carriers

From September 2005 to May 2009

Source : Alphaliner

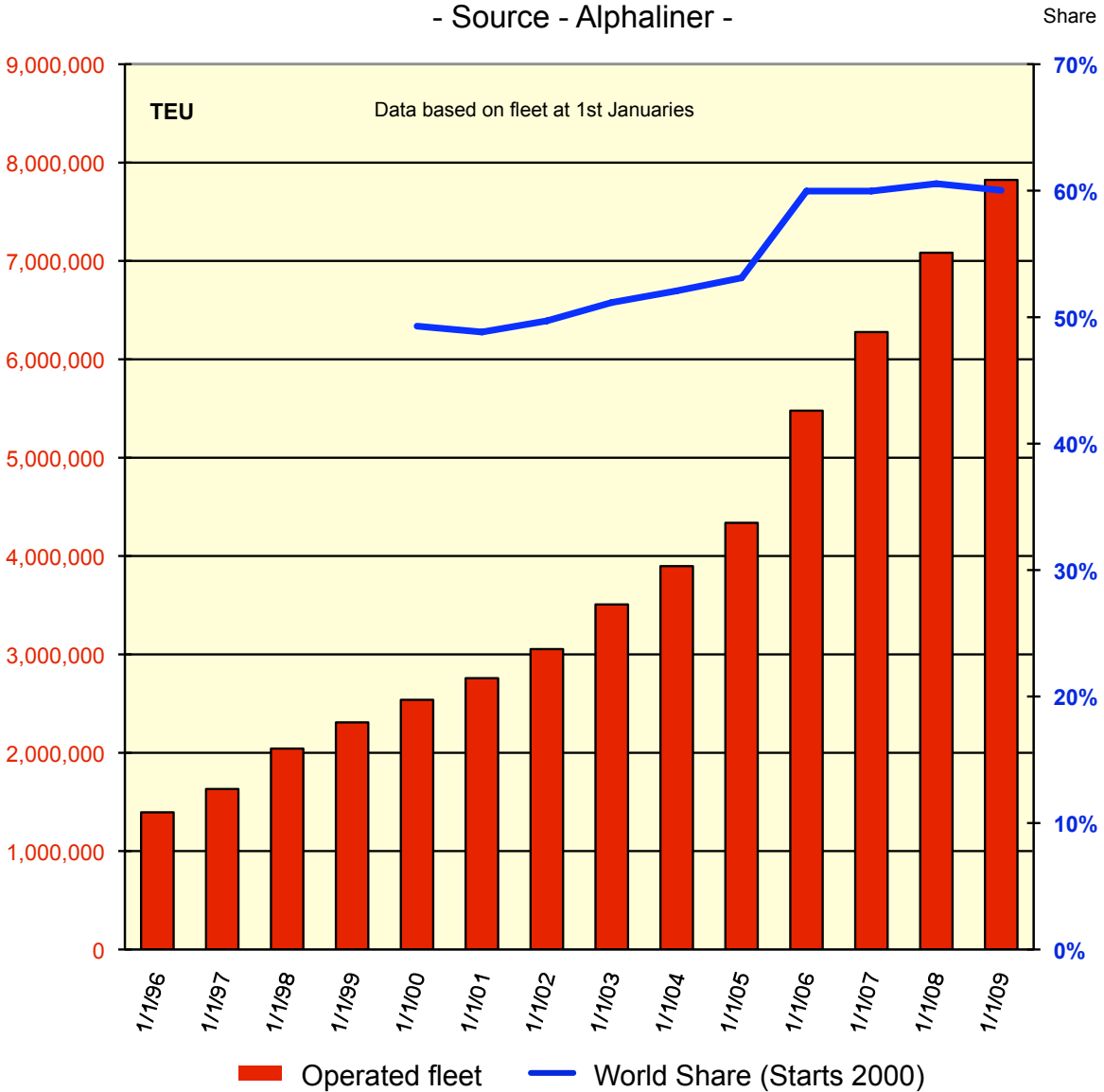


This graph shows the evolution of the global market shares of the TOP 5 carriers since September 2005 when P&O Nedlloyd was purchased by APM-Maersk and CP Ships was purchased by TUI / Hapag-Lloyd

Evolution of operated fleet - 1996-2008

TOP 10 Carriers

- Source - Alphaliner -

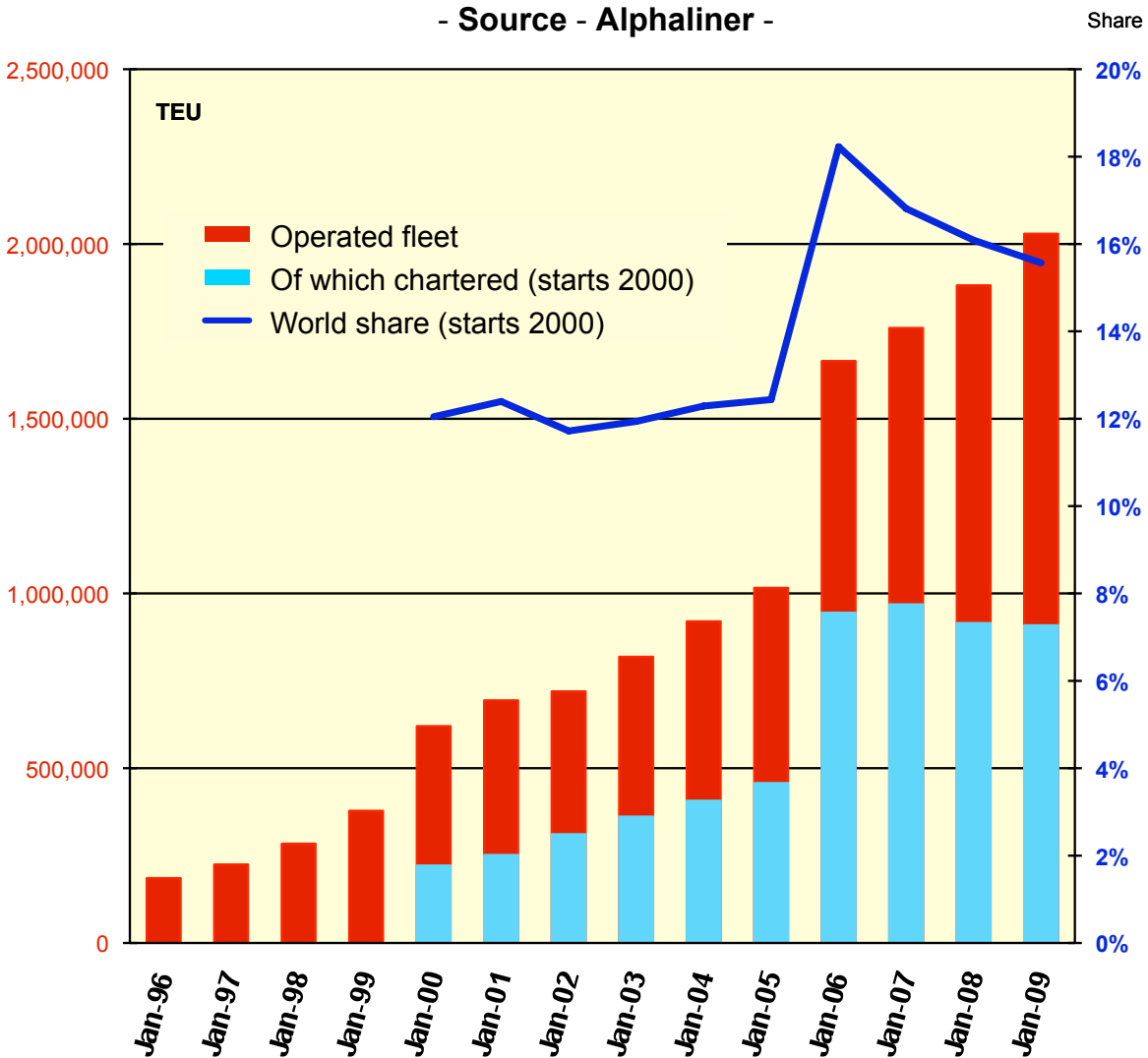


- > The cumulated fleets of the TOP 10 carriers have trebled between Jan 2000 and Jan 2009
- > The market share of the TOP 10 carriers has increased from 50% to 60% from Jan 2000 to Jan 2006
It has stagnated since Jan 2006 around 60%

Evolution of operated fleet - 1996-2009

A.P. Möller-Maersk

- Source - Alphaliner -



Data based on fleet at 1st Januaries

Notes :

* APM-Möller-Maersk is listed on the Copenhagen Stock Exchange

A.P. Möller-Maersk was founded in 1886 by Captain Peter Maersk Möller

- > 1999 - A.P. Möller (APM) bought Safmarine
- > 1999 - A.P. Möller (APM) bought Sea-Land Service
- > 2002 - A.P. Möller (APM) bought Torm Liner service
- > 2005 - A.P. Möller (APM) bought Royal P&O Nedlloyd